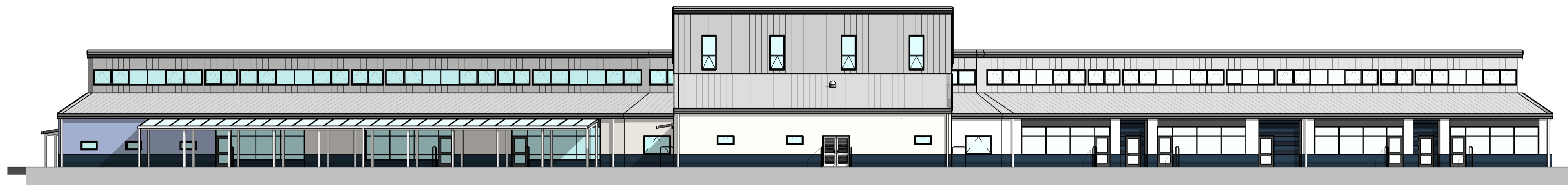
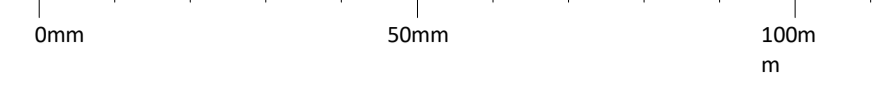


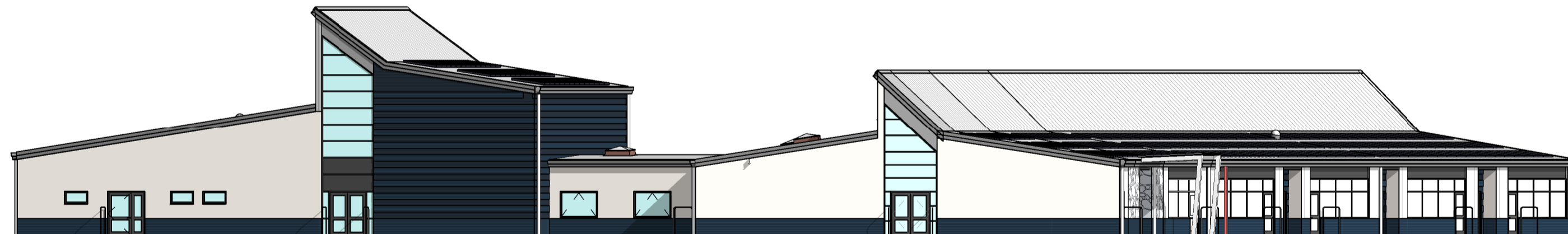
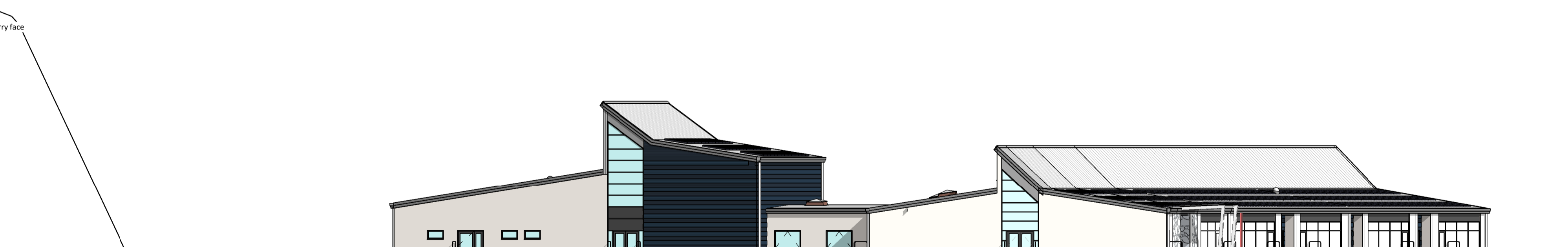
Responsibility is not accepted for errors made by others in scaling from this drawing.
All construction information should be taken from figured dimensions only.



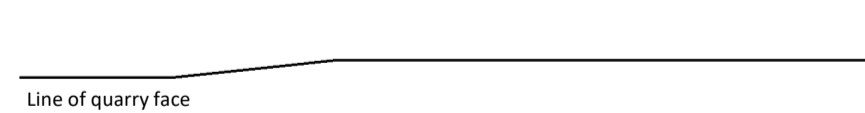
02002 - Elevation 1 - Phase 2 North Elevation
1 : 200



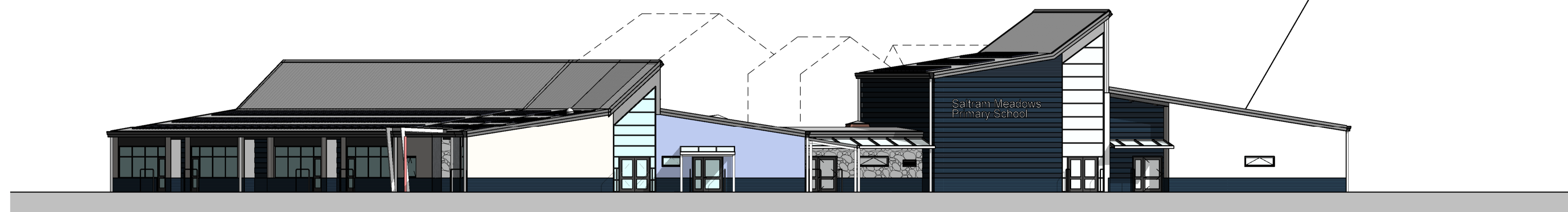
02002 - Elevation 2 - Phase 2 South Elevation
1 : 200



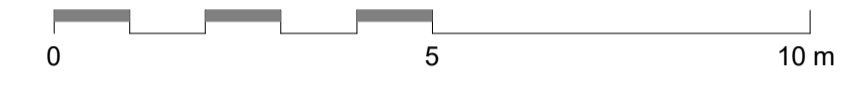
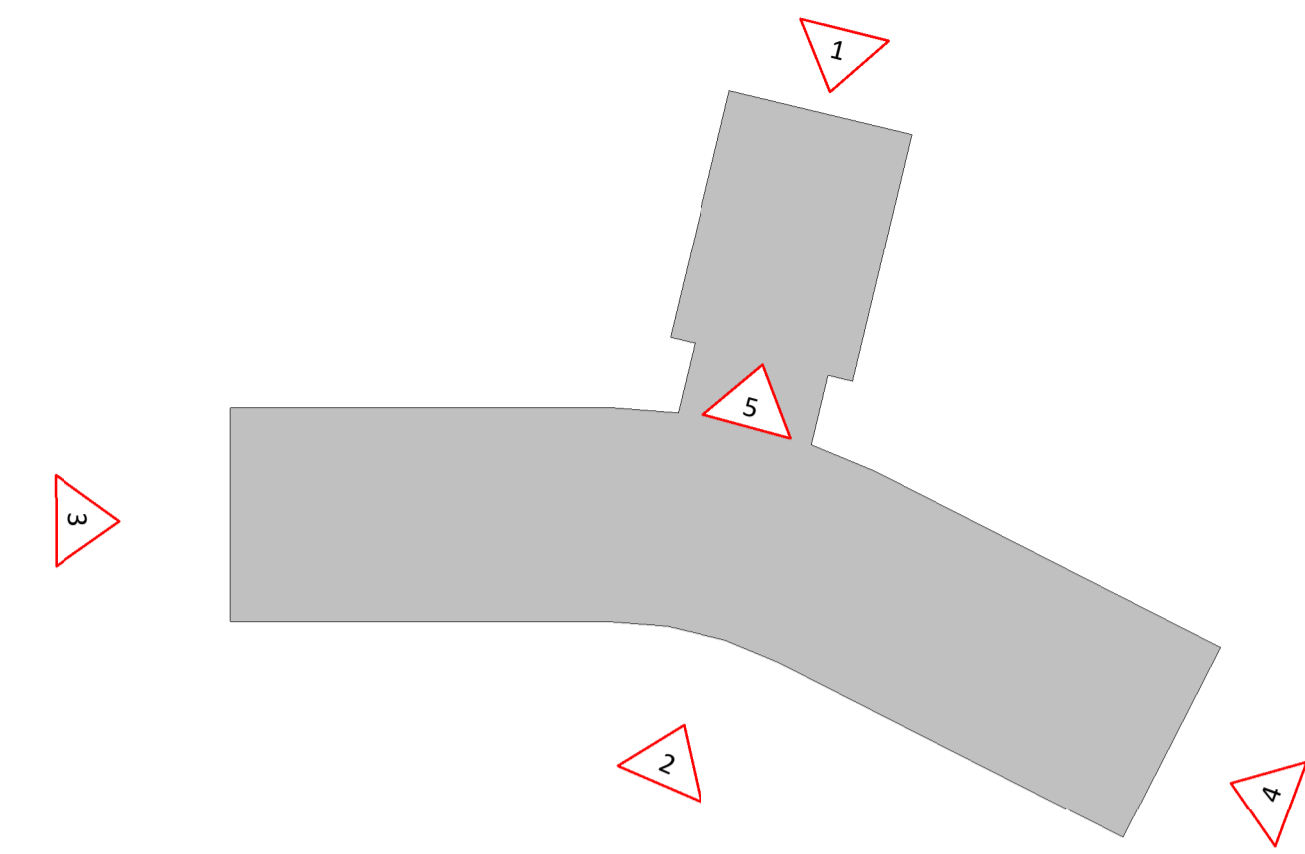
02002 - Elevation 3 - Phase 2 West Elevation
1 : 200


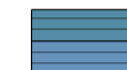

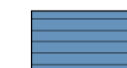
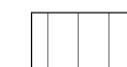




02002 - Elevation 4 - View of hall from link
1 : 200



02002 - Elevation 5 - Phase 2 East Elevation
1 : 200



-  White through colour render
 -  Banded Engineering Brick to hall and entrance recesses
 -  Blue through colour render (nursery)
 -  Engineering Brickwork
 -  Stucco embossed aluminium standing seam roof
 -  Stone work to suit adjoining developmnet
 -  Polyester powder coated RAL 7016 to external windows and window over panels, doors, and canopy structure.
- Gutters, Rainwater pipes, Fascias and Verge - PPC RAL 7016

STATUS	REV	DATE	DESCRIPTION
PL	P9	03/07/201	Update for planning resubmission
PL	P8	02/07/201	Sheet name amended
PL	P7	18/06/201	PLANNING ISSUE
S1	P6	06/06/201	Revised pre-app issue

STATUS	REV	DATE	DESCRIPTION	REVISED BY
CLIENT				EC
CHECKED BY				RP
ORIGINATOR NO				151280

CONSULTANT
STRIDE TREGLOWN
www.stride-treglown.com © Stride Treglown Limited 2017

PROJECT
Saltram Meadows Primary School
Plymstock, Plymouth

DRAWING TITLE
2FE GA Elevations (overall)

SUITABILITY STATUS	SCALE
PL : PLANNING	As indicated
PROJECT ORIGINATOR ZONE LEVEL TYPE ROLE CLASSIFICATION	@ Δ 1'
151280-STL-XX-XX-DR-A-XXXX-02002	P9